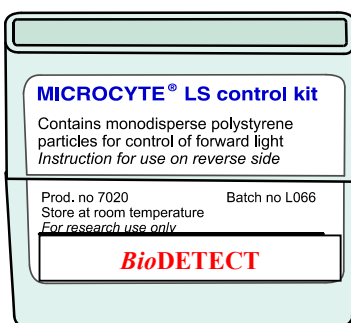


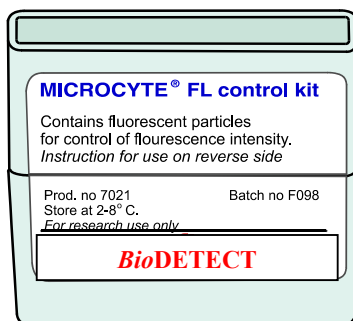
# MICROCYTE<sup>®</sup> control and calibration kits



## MICROCYTE<sup>®</sup> LS control kit

For control of light scatter intensity

Prod. No. 7020



## MICROCYTE<sup>®</sup> FL control kit

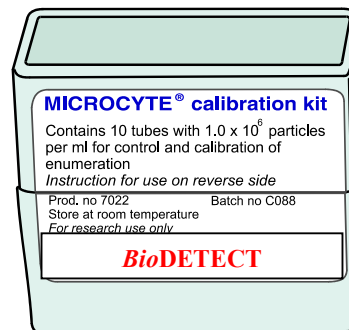
For control of fluorescence intensity

Prod. No. 7021

## MICROCYTE<sup>®</sup> calibration kit

For control and calibration of counting accuracy

Prod. No. 7022



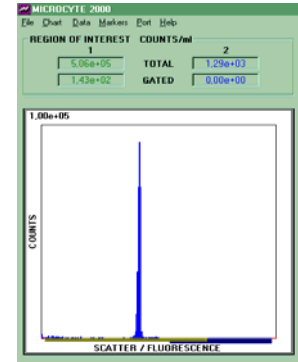
**BioDETECT AS recommends weekly use of kits 7020,7021 and 7022 for regular monitoring of the instrument performance. Please report the performance results obtained with these kits if you experience any problems with your MICROCYTE<sup>®</sup>.**

**Please see reverse for product information.**

## Prod. No. 7020 MICROCYTE<sup>®</sup> LS control kit

The kit contains 2 x 1 ml dropper bottles of monodisperse particles of 1 µm and 10 µm diameter. One drop of the particle suspension is mixed thoroughly with 1 ml filtered water, then analysed on MICROCYTE<sup>®</sup>. The particles will give rise to a characteristic peak on the display, indicating the light scatter performance of the instrument.

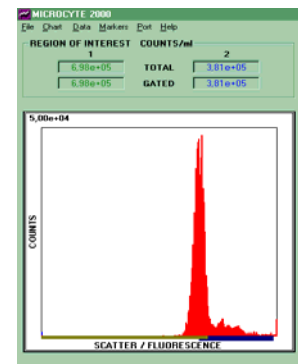
Figure 1 shows the light scatter histogram for the 1µm particles.



## Prod. No. 7021 MICROCYTE<sup>®</sup> FL control kit

The kit contains 2 x 1 ml dropper bottles of monodisperse particles of the same size with two different fluorescence intensities. One drop of the particle suspension is mixed thoroughly with 1 ml filtered water, then analysed on MICROCYTE<sup>®</sup> in fluorescence mode. The characteristic peak on the display indicate the fluorescence performance of the instrument.

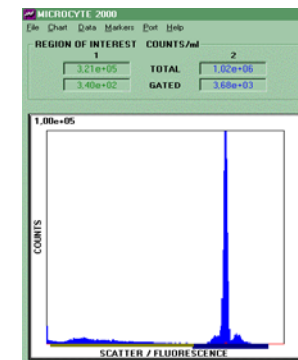
Figure 2 shows the fluorescence histogram for the "high intensity" fluorescent particles.



## Prod. No. 7022 MICROCYTE<sup>®</sup> calibration kit

The kit contains 10 x 1 ml vials with monodisperse polystyrene particles at  $1.0 \times 10^6$  particles per ml. One vial is agitated thoroughly and analysed on MICROCYTE<sup>®</sup>. ROI 2 is set to include the calibration particles only. If the flow rate is correct, the counts in ROI 2 will be exactly  $1.0 \times 10^6$  (SD < 5 %). The flow rate can, if necessary, be adjusted by the user. Each vial is to be used only once to avoid dilution, volume reduction or contamination.

Figure 3 shows the typical performance of our calibration particles. In this case the Total counts in ROI 2 is  $1.02 \times 10^6$ , which indicates correct flow rate.



BioDETECT AS, Olaf Helsets vei 5, POB 56 Bogerud, N-0621 Oslo, Norway Phone: +47 22628152 Fax: +47 22628151  
[mail@biodetect.no](mailto:mail@biodetect.no) [www.biodetect.no](http://www.biodetect.no)

BioDETECT develops, manufactures and markets instruments and kits targeted at the pharmaceutical, beverage, water, military/civil defense and OEM markets. The products aim at offering robust, rapid and accurate enumeration and analysis of microorganisms from a liquid, air or powder sample.