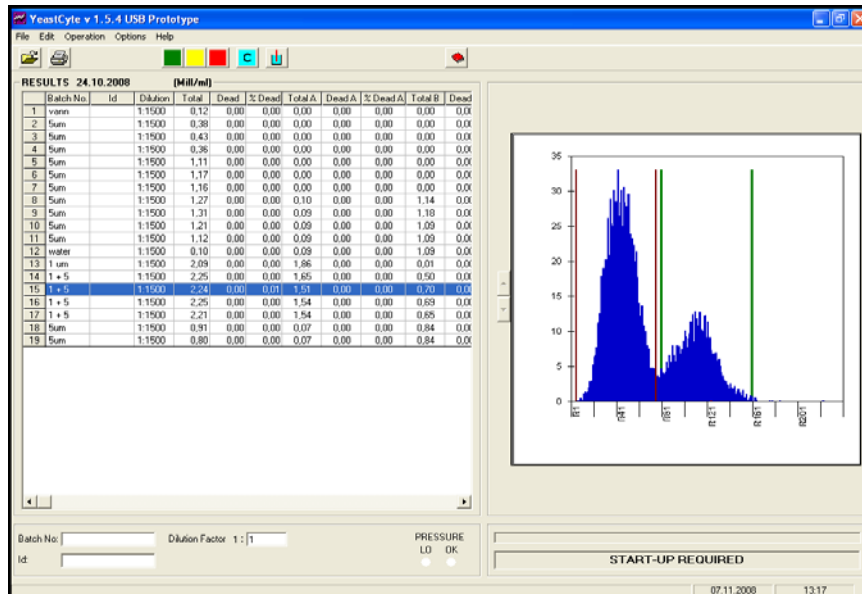


# YeastCyte upgrade kit 3035

**To be used together with YeastCyte 3001**

BioDETECT has updated their successfully flow Cytometer YeastCyte 3001 with more features in the histogram, giving the users more output information in each sample.

**For new customers you will get these features automatically when ordering a new YeastCyte 3041**



## New features included

- Multiple discriminator , make it possible to count 2 or more different cell types pr sample
- single discriminator , with preset value for the size of the cells
- possibility of noise discrimination

## What is included:

- 200922** Software 1.5.USB
- 200401** Motherboard YC2
- 200689** USB cable
- 200649** Cable set internal
- 200096** Rear panel

## Computer requirements for the upgrade kit to YeastCyte.

The existing computer that is used with the YeastCyte 3001 will probably be good enough to use after upgrade also. Computer need to have at least one USB port and a possibility for reading a CD with new software or down load the software from internet.

If you want to transferring files from YeastCyte to Microsoft Excel files, the computer need to have MS Excel software installed.

## Installation of YeastCyte Upgrade kit 3035

The upgrade kit has to be installed by an engineer from BioDETECT.

More information and latest update please see: [www.biodetect.no](http://www.biodetect.no)

For ordering or more questions please contact us by using one of the contact details below